

SEND Pathway



Children and Families Act 2014

SEND Code of Practice May 2015



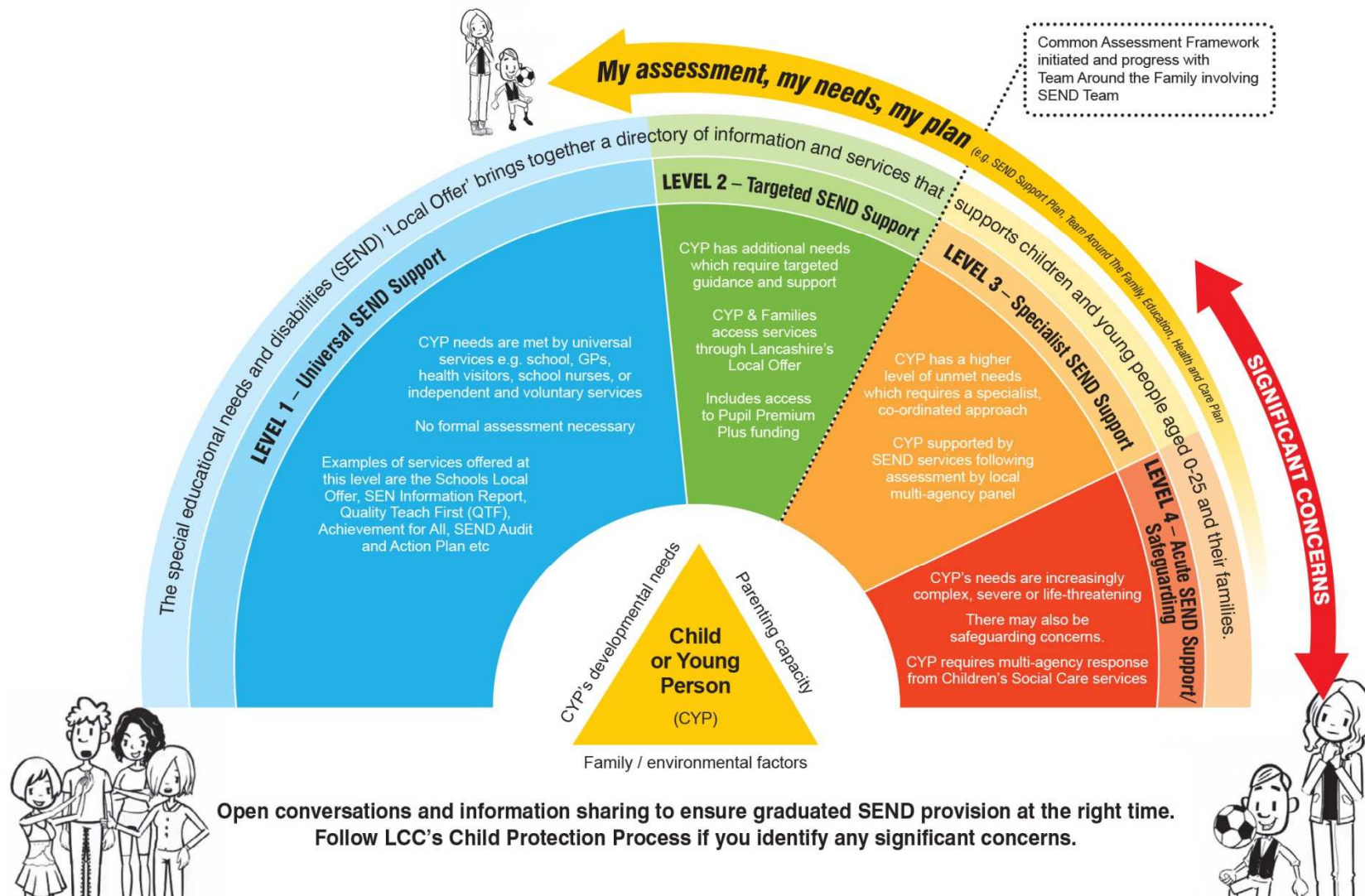
The recipe for success

Legislation

Guidance

Good Practice

Lancashire SEND Graduated Response



Roles & Responsibilities

CYP

- School
- Parent Carer
- GOV
- LCC
- Health
- Community

Harmony

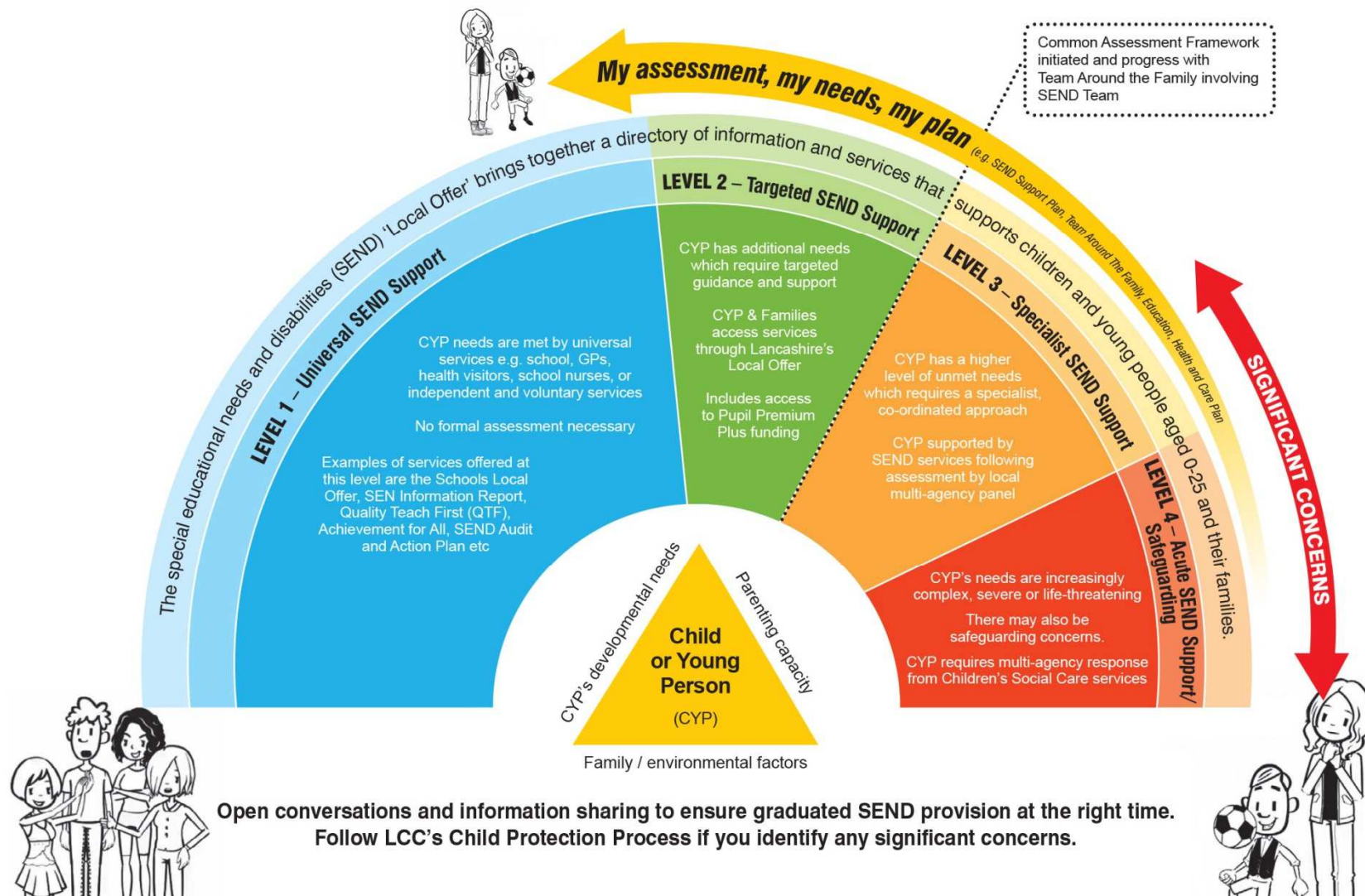


TAF/CAF/Link & Co-production



- Birth
- Portage
- Early Years
- Primary School
- Secondary School
- Specialist School
- Post 16 School / College
- Supported Internship / Apprentice
- Independent Specialist College (Post 19)

Lancashire SEND Graduated Response



Questions ?